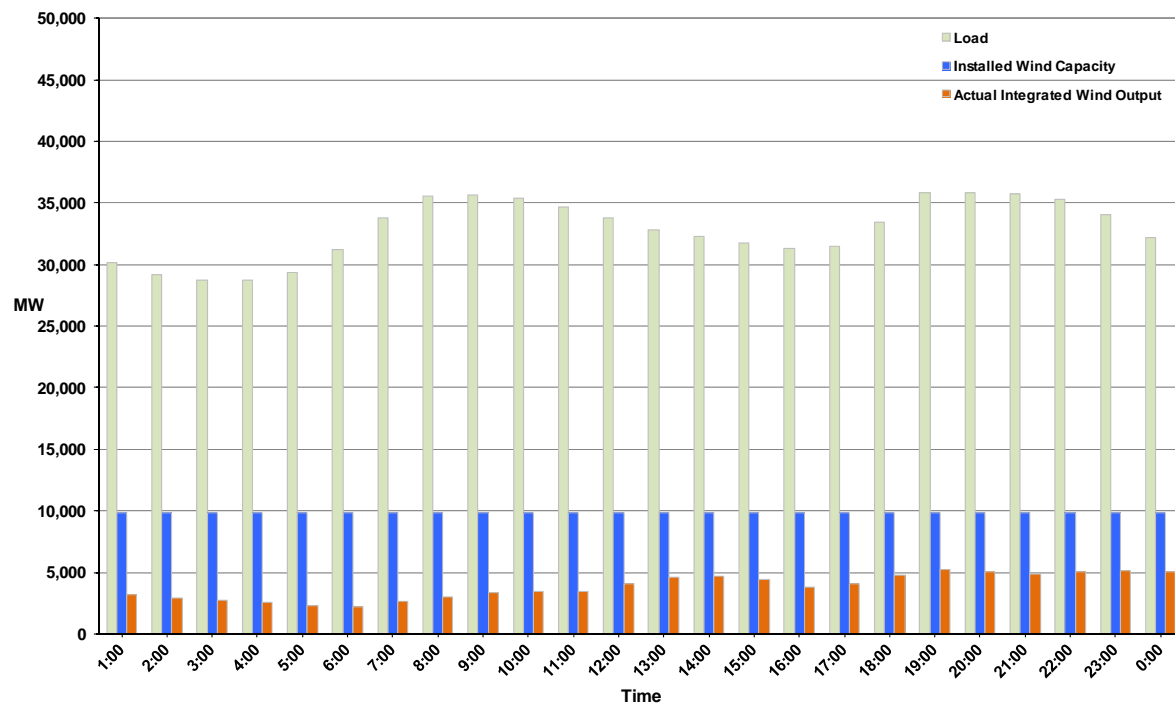




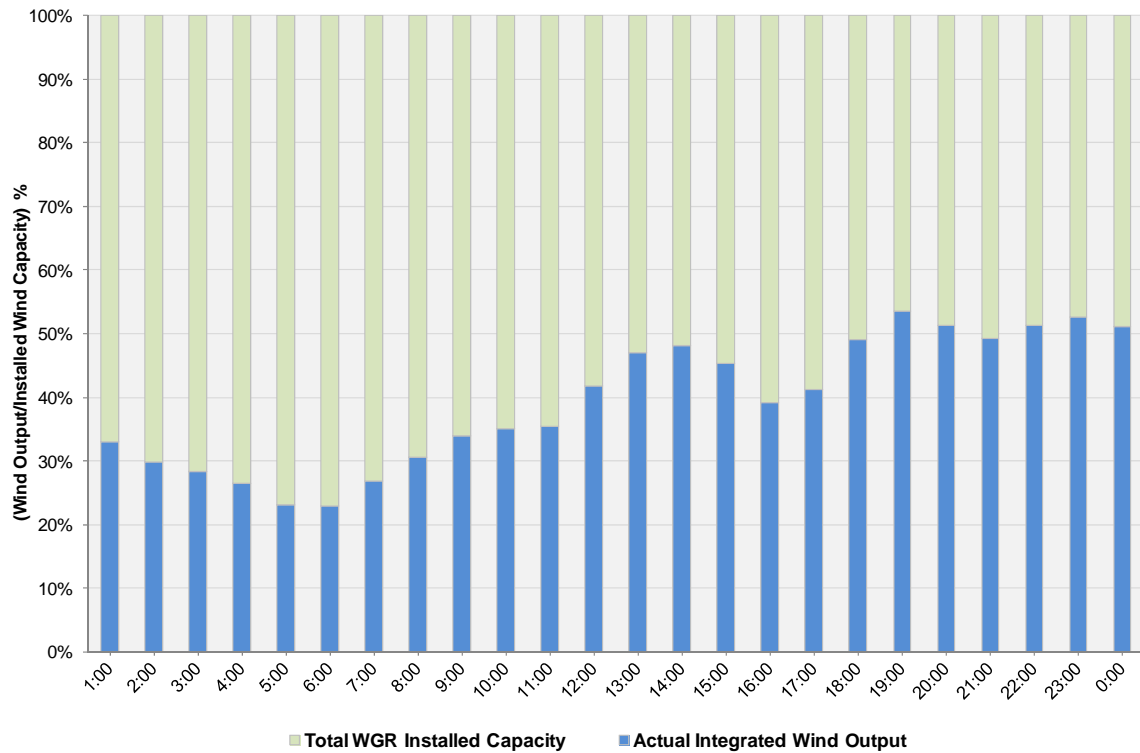
## ERCOT Grid Operations Wind Integration Report: 12/22/11

Peak Load	<b>35,855 MW</b>
Load Peak Hour (HE)	<b>20</b>
Wind over Peak	<b>5,027 MW</b>
Wind Record 10/07/11	<b>7,400 MW</b>
Max Wind Value	<b>5,388 MW</b>
Wind Peak Time	<b>18:41</b>
Wind Integration %	<b>14.97%</b>

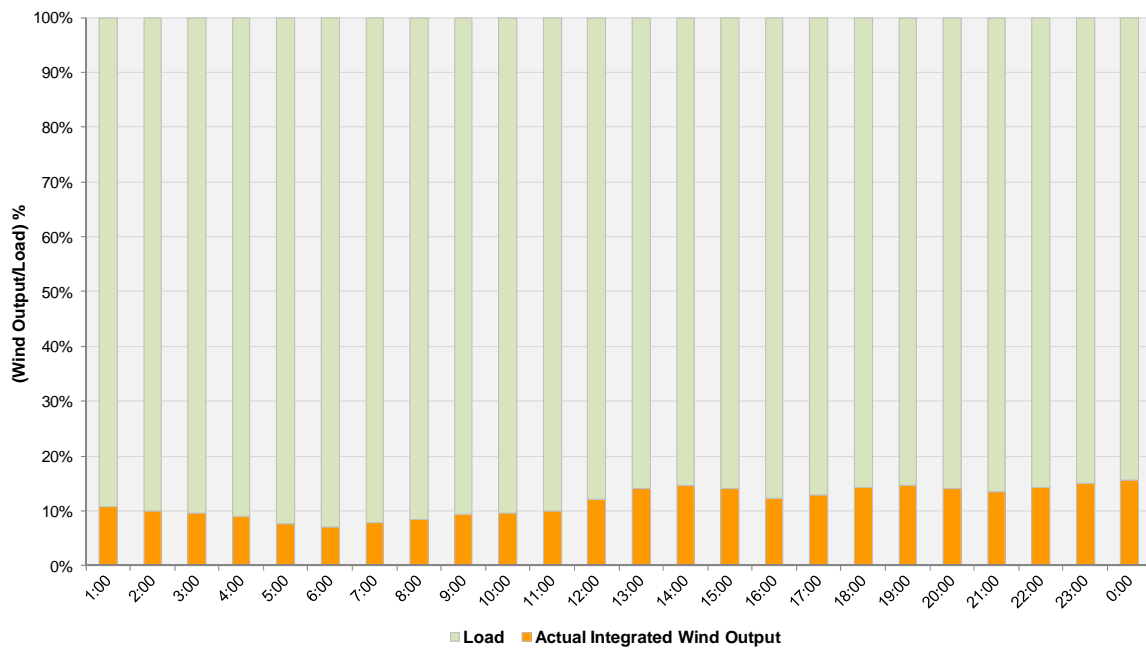
**Hourly Average Actual Load vs. Actual Wind Output  
12-22-2011**



**Actual Wind Output as a Percentage of the Total Installed Wind Capacity**  
**12-22-2011**



**Actual Wind Output as a Percentage of the ERCOT Load**  
**12-22-2011**



ERCOT Load vs. Actual Wind Output 12/15/2011 - 12/22/2011

